



Wings



Our Mission: To provide comprehensive family-centered resources that bring hope and healing to children, youth and families across Nebraska in a compassionate and caring manner.

Our Vision: A world where families have a clear pathway to the resources they truly need to lead healthier, more hopeful lives.

Epworth Family Resources Board Recognition



Lance Clay

Rev. Lance Clay is the Senior Pastor at the Hastings First United Methodist Church. He serves as the President of Epworth Board of Directors. His experiences in nonprofit include 42 years in pastoral ministry, Former District Superintendent – Great Plains Conference, Rotarian; Kiwanian, McCook #135 A.F. & A.M., and Hastings Symphony Board of Directors. He was introduced to the board as a part of his role as the District Superintendent of the Prairie Rivers District. Lance states “Epworth has a long history of providing ministry to children, youth, and families – beginning with Mother Jewels Orphanage. It advanced into residential care and now has moved forward to be in ministry to children, youth and families in new ways. The staff serves in ways that are beyond excellence in providing care and support. As far as the future, Rev. Clay sees Epworth continuing to be on the cutting edge of any form of ministry that will benefit and bring healing to families in crisis, and when possible even before a crisis becomes unmanageable.



Trudy Hanke

Trudy Hanke is currently the pastor of York First United Methodist Church and began serving on the board of Epworth Family Resources in August 2021. She currently serves as Vice-President. Pastor Hanke’s non-profit experience has mostly been through serving in communities where she has been pastoring, by serving on committees, boards, raising funds, encouraging others to serve, and provide resources. Pastor Trudy became more involved with Epworth Family Resources after moving to York, Nebraska. The United Methodist Church has a connection with Epworth and with the recent move into the lower level of the York First United Methodist Church, she looks forward to building a strong partnership that supports the mission of hope, healing, and healthier families. There are many struggles families face today and Pastor Trudy sees the future of Epworth as being a resource that helps families move from just surviving to thriving.

Also, she looks forward to Epworth becoming more involved in the communities Epworth serves and building deeper community connections. Pastor Trudy says, “it is a privilege to serve on the Board of Epworth and I appreciate the dedication of those who work, volunteer and support Epworth Family Resources.”



Richard McDougall

Richard McDougall has served on Epworth Family Resources Board since January 2020 and is the Treasurer. Richard began his career with Cornerstone Bank in January 2002. Richard is a graduate of the University of Nebraska – Kearney and a graduate of the University Of Nebraska College Of Law. He is a member of the Nebraska Bar Association and a member of the Real Estate and Probate Law Sections. Richard is a graduate of Cannon Financial Institute, and has achieved the



Rev. Charles Murithi

Rev. Charles Murithi has served on the Epworth Family Resources board since July 2021. Rev. Charles Murithi is currently the District Superintendent for Prairie Rivers District and Elkhorn Valley District. D.S. Murithi worked for the Kenyan government for two years as a lab technician before coming to the United States, where he

earned his master’s degree and doctorate in ministry, with an emphasis in evangelism, from Perkins School of Theology at Southern Methodist University. His first appointment was in 2000 in the former Nebraska Conference, to Henry and Morrill UMCs, then Norfolk First, Norfolk Westridge and Battle Creek in 2005, to Alliance and Lakeside in 2010, and he served in Nebraska City from 2012 until his appointment as district superintendent. .

Certified Trust & Financial Advisor (CTFA) designation from the Institute of Certified Bankers. He has served as an estate planning instructor for the National Business Institute and is an instructor for the Nebraska/Kansas Schools of Banking Advance Trust School. Richard served as a member of the Nebraska/Kansas Schools of Banking Advisory Trust Committee. He has served as legal counsel to the Nebraska State Treasurer and serves on various state and local boards and committees. Richard and his family are originally from DeWitt, Nebraska and have lived in York, Nebraska since 2002.



Joyce Solomon is the Secretary for the Epworth Board of Directors. Since retirement she has learned to drive a semi to help with corn harvest. Joyce has donated her time, gifts, and support for many years to Epworth Family Resources as well as other nonprofit organizations.

Joyce Solomon

She believes in the mission and ministry of Epworth Family Resources. Joyce was asked to be part of a group who would go to various United Methodist Churches to talk about the challenges and successes of Epworth's work with children and families.

As a United Women in Faith Conference Officer, she was the liaison to the Board of Directors. When her term was up on the Conference UWFaith she was asked to continue on the Board of Directors.

Joyce's expectations for 2024 are to continue the mission and vision of Epworth Family Resources and to work toward increasing support and giving from the community and the Conference United Women in Faith.



Kalaba Kapundu is the pastor at Cairo & Boelus Grace UMCs.

Kalaba Kapundu

Kalaba has worked with nonprofits in the food security programs, mostly doing socio-economic surveys and recommendation on how to eradicate rural poverty. Now he works part-time at Hope Harbor as a Direct Care Staff. Kalaba was invited by Rev. Lance to join the board since he knew that one aspect of his ministry is based on

supporting families that have experienced trauma, divisions, and struggles. He also likes to work with people who struggle with mental illness. His hopes for Epworth in 2024 are to facilitate and equip foster homes to be a safe place for children.



Marilyn Zehring was a member of the Epworth board from 2000-2004 and became an active board member again from 2012 until present. Marilyn serves as chair of the strategic committee and is also on the executive and Heart of The Matter committees. She chaired the strategy committee during the time of discerning and deciding what to do with Epworth Village property and the renovation at .

Marilyn Zehring

York First UMC. Marilyn was the Director of Women's Division (the Governing Board of United Women in Faith), Director of General Board of Global Missions, President Nebraska Conference United Methodist Women, First President of Friends of the Columbus Public Library, PTA President and held many leadership roles in the local, district, conference and Jurisdiction levels in the United Methodist Church.

Marilyn believes in the mission of Epworth to better the lives of children and women. "If I can make a difference then I am making a difference."

For 2024 Marilyn's expectations are to continue to grow our programs and support our staff as we settle into our new offices. "We can finally put our moneys into programming rather than property. We are able to spread the story of Epworth Family Resources throughout the Great Plains Conference. We make a difference in the lives of our clients."



Lynn Wallasky is President Elect on the Epworth Board of Directors. She is a life-long educator and for the past 45 years she has been a clergy spouse. Lynn states "non-profits have made an enormous impact on any community that I have experienced. People coming together for a common goal and making a positive change." Currently she is a consultant for Nebraska

Lynn Wallasky

Children and Family Foundation that guides nonprofit collaboratives for the common wellbeing of communities across Nebraska. Since moving back to Nebraska, Lynn has become a certified Mediator with The Mediation Center in Lincoln, NE, a nonprofit organization. While in AZ, she volunteered as a co-director of The INN Project, a nonprofit organization that welcomed asylum seekers as they made their way through the confusing avenues of the US and to their families. In Las Vegas, NV, Lynn was able to help lead groups of adults that were learning to listen and become a resource for young adults that had aged out of the foster care system through OPEN TABLE, a program through the North District of the Desert Southwest United Methodist Church. One of her most joyous jobs with nonprofits is to be a cheerleader for all that are working to end poverty for ALL children and their families.

Lynn choses to volunteer in organizations that make a difference. Her respect and appreciation for Mother's Jewels heritage continues to grow as her knowledge of the past continues to be influenced by the stories of hope.

Epworth Village and now Epworth Family Resources purpose is to give families and their kids HOPE. "Having talked with a family at our last Heart of the Matter event, I heard how an Epworth Staff member had become not only a paid resource but a reliable confidant." If she can help the administration provide an environment where families and children in crisis can find the resources to be and become the loving guides for their children, our world will be changed for the positive, one child at a time. Epworth Family Resources is making a difference.

Her expectations for Epworth will be to continue to make a difference for individual families and children by strategically coaching to their strengths using preventative measures.

Lynn stated "I'm excited about sharing the Epworth hope to our partners in churches and communities across Nebraska and Kansas."



Ann Cerveny is a board member from Lincoln, NE. She represents the Great Plains Conference United Women in Faith and serves on the Heart of the Matter Committee.

Anne Cerveny

Ann has been involved with several nonprofits through her work with Lincoln Saint Paul UMC mission groups. Most recently she has worked through Lutheran Family Services to sponsor refugee families from Myanmar, Iraq, and now Afghanistan. This involves furnishing an apartment, providing transportation to appointments, and helping them navigate and understand the many hurdles to creating a successful life in a foreign country.

She was asked by the Great Plains Conference United Women in Faith to serve on the Epworth Family Resources Board as their representative. Epworth has been one of the National Mission Institutions that UWFaith has supported since its earliest beginnings. Ann appreciates how important and necessary the supportive work Epworth provides for children and families.

Ann believes Epworth's new location and rebranding will allow it to continue to grow this important work in York and its many surrounding counties.





Louise Niemann has continuously served for 20 years on the Epworth Board of Directors. She has served as vice president and president of the Epworth Board. Her role as District President of United Methodist Women was her entry as an Epworth board member. Continuing as Conference President, Program Advisory Group, South Central Jurisdiction and Director have kept her on the Epworth board as a liaison of United Women in Faith. Prior to and during this time, she cut and saved Campbell's Soup labels for the Epworth vans and filled pill bottles with coins for the "Mr. Can you Spare a Dime" campaign to help fund the Dinsdale building on campus. Yes, her local UMW unit also sewed warm, cozy quilts that Epworth was known for. Two of her proudest roles was helping with the establishment of Little Jewels Childcare Center and locating Epworth Family Resources to York First United Methodist Church in York NE. Louise hopes to continue the quality programming that Epworth is known for, In-home Family Services, Foster Care, and Little Jewels Childcare Center.

Louise Niemann



Jackie Pope is a retired elementary teacher and a member of the Epworth Board. Her past experiences with nonprofit have been Vice President of the Prairie Rivers United Women in Faith for the past several years. Epworth has always been a National Institution of our group. UWFaith's mission strives to make the lives and situations of women, youth and children better.

Jackie Pope

Therefore, she serves on the board to help see that Epworth is making a difference in the lives of youth and children along with their families.

Epworth is the first nonprofit board she has served on. Jackie was brought up as a Methodist in a small Nebraska community. She has fond memories during her childhood collecting dimes for and giving Christmas gifts to the children at Mothers Jewel's Home. Her parents always told her "we are so "blessed" and should always be a "blessing" to others, including the children at Mothers Jewel's Home." Throughout changes in her life and those changes at Mothers Jewels, Jackie stated she always seemed to stay connected in some way to Epworth. So when she was asked to serve on the Epworth board, she said yes. Jackie strives to be a blessing to Epworth Family Resources!

Epworth has been ever changing and responsive to the needs of children. With all the complications for families in life these days, Jackie expects Epworth Family Resources to be a resource families can depend on to find physical needs and spiritual hopes met.



Roberta Cool is a volunteer and Epworth board member. She is a volunteer with Red Cross, the Aurora UMC, the Plainsman Museum, the Aurora United Women Faith and the Hamilton Community Foundation. In recent years she has volunteered as an officer for Prairie Rivers District UWF, at the Nebraska State Fair, Aurora Team Mates, and Habitat for Humanity.

Roberta Cool

As a board member she sees this as an opportunity for district UWFaith officers to learn more about the mission of Epworth Family Resources. For the future of Epworth she hopes and prays that Epworth will continue to carry out their great mission work.



Todd Seifert

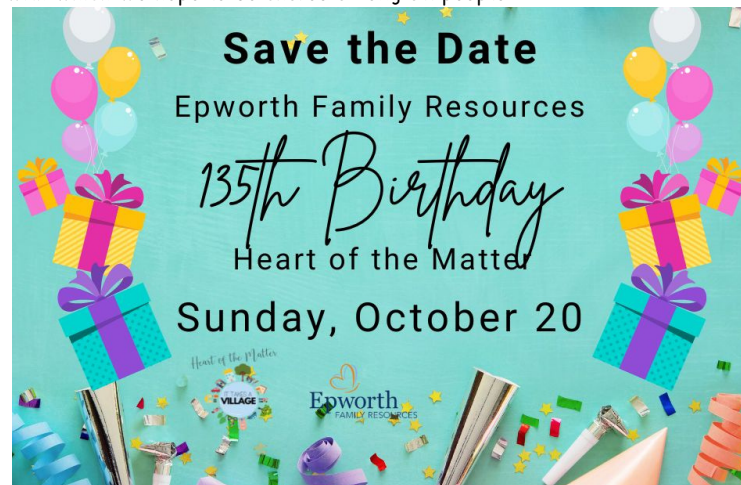
Todd Seifert is the Director of Communications of the Great Plains Conference of The United Methodist Church. He serves as a member of the board and on the strategy team.

In the past he has served on boards for nonprofits since his days as a newspaper editor with the USA Today network in Southern Utah. He has served on the board of

directors for the St. George (Utah) Kiwanis Club and on the board for Leadership Dixie (a community leadership development program). Most recently, he has served the maximum of two consecutive terms on the leadership team for the United Methodist Association of Communicators, with duties including the design, implementation and maintenance of the UMAC website, as well as assistance in developing programming for the organization's members.

Todd chose to volunteer for Epworth because he did a story for the Great Plains Conference website about Epworth in the very early days of his time in ministry in Kansas and Nebraska, back in 2015. He was immediately drawn to the mission to bolster families and to make life even just a little bit better for kids facing difficult circumstances. He greatly appreciated the work done by the Epworth staff of addressing financial difficulties while continuing to put the interest of children and families first. He continues to be impressed with the way Epworth works to support families in these ever-changing times.

"My prayer for Epworth is that it continues to live into its mission statement of providing comprehensive, high-quality, family centered resources to families. By doing so, I firmly believe Epworth can bring hope and healing to children and their families by sharing compassion and exhibiting the care with which we hope to be shared among all people."



Join Our Team! Positions Available!

Little Jewels Teacher & Teacher Assistant

In-Home Family Life Specialist

For more information contact Rochelle at 402-362-3353.



P.O. Box 503-309 E. 7th St.

York, NE 68467

www.epworthfamilyresources.org

NATIONAL CRAFT MONTH-DIY TIN CAN FLOWER BIRD FEEDER

National Craft Month is an annual celebration of creativity and crafting that takes place every March. It was created to encourage people to explore their creative side, try something new, and share their crafty creations with others. Get your family, friends or on your own and get inspired! Bird watching can be very peaceful and entertaining at the same time. To celebrate Craft Month try the attached do it yourself bird feeder!

Materials:

- Clean, opened tin cans with labels removed
- Spray paint in choice of colors
- Pre-cut 6-in. wide foam flowers (available at most craft stores)
- Large wooden or plastic beads
- Thick twine
- Tools:
- Drill with drill bits or metal punch
- Hot glue gun and glue sticks



Step 1

On the side of each tin can, use a ruler to measure about a 1/4-in. from each end in a straight line. Then mark a dot at each of these points with a permanent marker. Use a drill or metal punch to make holes about 1/4-in. wide where the marked dots are. These two holes are where you will insert the twine for making a hanger later on.

Step 2

In a well-ventilated area, spray paint the outside of your tin cans in various colors. Apply as many coats as needed for full coverage and let dry 24-48 hours.

Step 3

Lay the open end of each can centered on a foam flower. Trace around the circle opening with a pencil. Centered inside the circle either freehand or use a compass to draw another circle about a 1/2 inch smaller all around. Then use a ruler to draw several crisscrossing straight lines inside the original traced circle (like the way a pizza is cut). First cut out the small inner circle. Then cut along each crisscrossing line, stopping at the traced outline of the original circle. This will make several tabs around the inner perimeter.

Step 4

Lay the foam flower face down on a flat surface. Apply a ring of hot glue around the perimeter of the traced circle. Then place the open end of the can aligned on top of the hot glue ring. Hold the can firmly in place until the glue dries. Hot glue each of the cut tabs down on the interior of the can rim to further secure the foam flower in place.

Step 5

For the hangers, first cut a 12-18 in. piece of twine for each of your cans. Thread one end through the back hole, inside of the can and back up through the front hole. With even lengths of twine, place several large beads on each loose end. Knot the top of the twine to secure the hanger with beads in place. Repeat for each tin can feeder.



In-Home Family Services help families by providing direct assistance and coordination of community resources so the challenges the family is facing are addressed quickly and effectively. We help the family work towards remaining a family unit and/or meet the goals of reunification in a healthy and safe environment.

Epworth Family Resources works with families whose children or youth are in imminent risk of out-of-home placement or who are at the point of coming back into their homes to reunite with their families.

Epworth's professional staff provides services to first meet the basic family needs such as a clean and safe living environment, nutritional resources, and personal health and hygiene concerns.

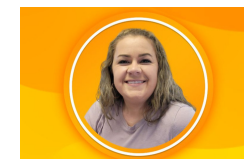
MEET THE TEAM!



Sheila Decker
In-Home Family Service Manager



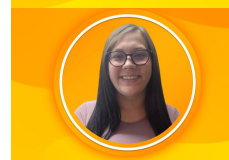
Martha Burgess
In-Home Family Life Specialist



Candace Watkins
In-Home Family Life Specialist



Shiloh Lively
In-Home Family Life Specialist



Savanna Binnick
In-Home Family Life Specialist



Raquel Dean
In-Home Family Life Specialist

Staff Spotlight

Eunice Warui

Eunice Warui is a Foster Care Specialist at Epworth Family Resources. She earned a BSW in Ministry at the University of Missouri in St. Louis. She started at Epworth in November 2023. Eunice enjoys helping people with resources.



Her previous experience includes:

- The Bridge for the Homeless in downtown St. Louis, MO.
- Sunny hill Inc. St. Louis, MO.
- Nurses and Company in St. Peters, MO.
- Wauneta Care and Therapy, Nebraska
- Youth and children director UMC church- Palisade, NE.
- Hearthstone York, NE.
- Sunrise Country Manor in Milford, NE.

Eunice moved to this area from Southwestern Nebraska with her family. She is a wife and mother of three (Doxa, Dunamis and Theo).

They are Greek names which when translated in English means:

Doxa- δόξα -(from Doxology means)Glory.

Dunamis- δύναμις -(from the word dynamite means) Power.

Theophilus- θεόφιλος means Loved of God.

Eunice was born and raised in extreme poverty in Kenya and that is why she feels called to help others where she can and that's why she became a social worker.